





# IMPORTANT DATES FOR Fall Admission

## JULY 1

ApplyTexas Application Opens  
[ApplyTexas.org](https://www.applytexas.org)

## OCTOBER 5

Housing Application Opens

## NOVEMBER 1

Scholarship Applications Open

## DECEMBER 1

FAFSA Application Opens\*  
[StudentAid.gov](https://studentaid.gov)

## MARCH 1

Early Awarding for Scholarships Begins

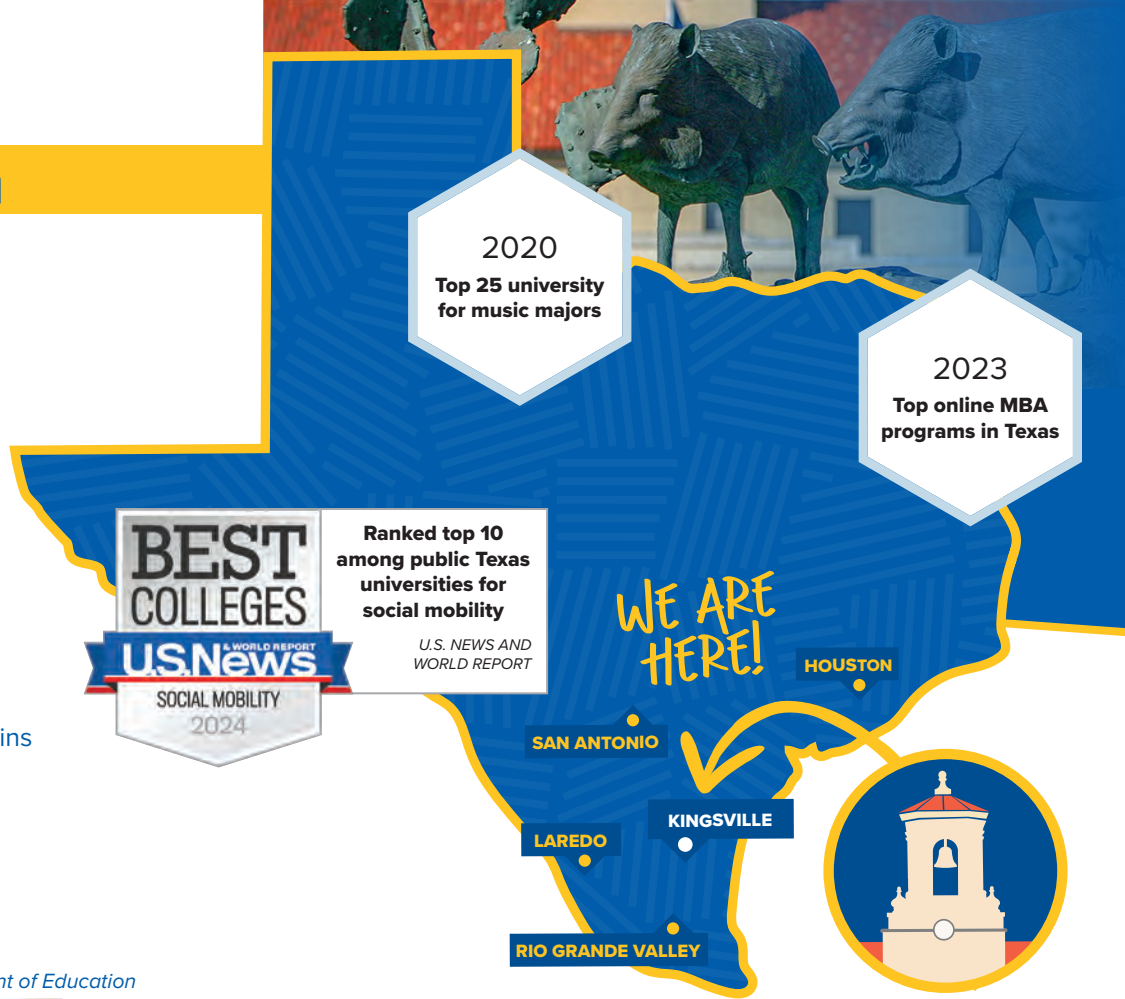
## MAY 1

New Student Orientation Begins

## AUGUST 1

Fall Admission Deadline

\* Subject to change based on U.S. Department of Education



## JAVELINA PROMISE PROGRAM

Texas A&M University-Kingsville will cover tuition and mandatory fees for up to 4 years for eligible students. Javelina Promise will provide up to \$40,000 to help you complete your first bachelor's degree!

For more details, go to [tamuk.edu/JavelinaPromise](https://tamuk.edu/JavelinaPromise).

## SCHOLARSHIP OPPORTUNITIES

### JAVELINA MERIT SCHOLARSHIPS

- Merit-based scholarships are awarded to new freshmen with outstanding academic qualifications.
- Awards are up to four years if students meet eligibility criteria.
- Scholarships are awarded based on information from admission application.
- No separate application is required.

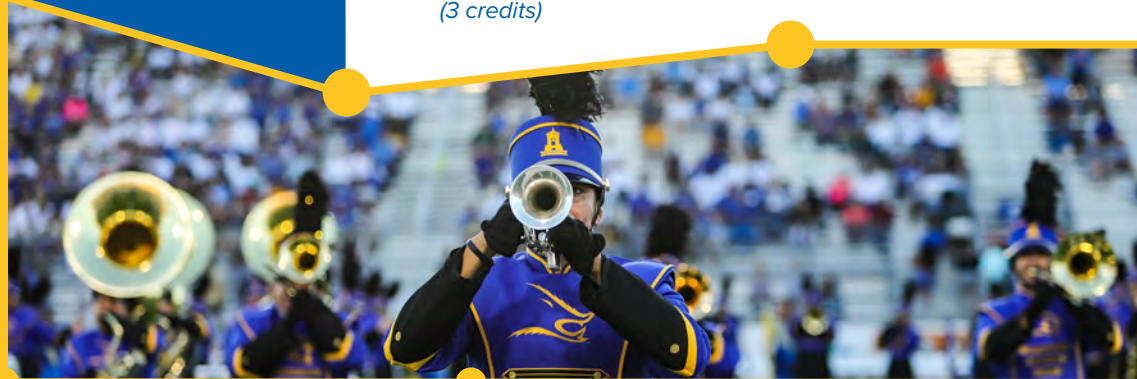
## HOUSING & RESIDENCE LIFE

As an undergraduate student at Javelina Nation, living on campus means you have a place to call home in the heart of the University. Pick from one of our four residence halls. Your classes are just a short walk away, as is our newly renovated Student Recreation Center, the Jernigan Library, and dining options that include Starbucks, Chick-fil-A, Pizza Hut, and the Javelina Dining Hall. Meet new people and build a community all from your new home. Plus, research shows that students who live on campus have higher GPAs.

# BECOME A PART OF Javelina Nation

- Complete your application at **ApplyTexas.org**.
- Submit your official high school transcript and/or all college transcript(s) to Texas A&M University-Kingsville.
- Submit the Free Application for Federal Student Aid (FAFSA) at **StudentAid.gov** beginning December 1. FAFSA Code: 003639

The Office of Student Financial Aid is committed to maximizing your financial aid options and answering any questions you may have. You can contact us at [financial.aid@tamuk.edu](mailto:financial.aid@tamuk.edu) or 361-593-5372 or stop by the Memorial Student Union Building on campus.



## ASSURED ADMISSION CRITERIA

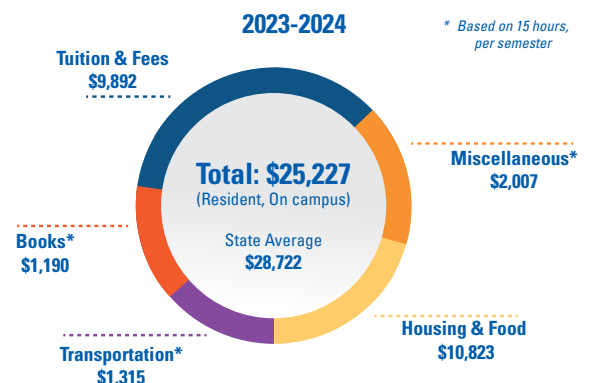
Freshmen who are admitted through assured admission must meet at least one of the following:

- **Class Rank:** Rank in the top 25% of graduating class
- **Optional Test Score:** Composite ACT score of 19 or better or minimum combined SAT of 1000 or better
- **High School Core GPA:** Applicants are following the Foundation High School Program with at least one endorsement. Standards for assured admission are based on the grade point average (GPA) achieved in the required high school curriculum. Assured admission freshmen must have a minimum of 2.7 core GPA in the following courses in high school:
  - **English Language Arts** (4 credits)
  - **Mathematics** (3 credits)
  - **Science** (3 credits)
  - **Social Studies** (3 credits)
  - **Language other than English** (2 credits)

## INDIVIDUAL REVIEW

Students who do not meet Assured Admission Criteria can be admitted through the Individual Review process. This involves a holistic review of academic achievements, extracurricular activities, community service, talents, awards and other factors that support a student's ability to succeed at Texas A&M University-Kingsville. Applicants who do not meet Assured Admission Criteria are encouraged to highlight their achievements on their ApplyTexas application at **ApplyTexas.org**.

## ANNUAL COST OF ATTENDANCE



For more info visit [www.tamuk.edu/cost](http://www.tamuk.edu/cost)



Have questions?

361.593.5372

admissions@tamuk.edu



Schedule  
a campus  
visit



Follow us



@Javelinas



@JavelinaNation

# WHAT DO YOU want to study?

## Dick & Mary Lewis Kleberg

### College of Agriculture & Natural Resources

- Agribusiness B.S.  
Ranch Management
- Agriculture Science B.S., M.S.  
Environmental Science  
Plant and Soil Science  
Teaching Certification
- Animal Science B.S., M.S.  
Pre-Veterinary Medicine
- Animal-Wildlife Veterinary  
Technology B.S.
- Horticulture Ph.D.
- Plant & Soil Sciences M.S.
- Ranch Management M.S.
- Range & Wildlife  
Management B.S., M.S.
- Wildlife & Rangeland  
Sciences Ph.D.

## College of Arts & Sciences

- Applied Arts & Sciences B.A.A.S.
- Art B.A., B.F.A.
- Biology B.A., B.S., M.S.
- Biomedical Sciences B.S.
- Chemistry B.S., M.S.
- Communications B.A.
- Communication Sciences &  
Disorders B.S., M.S.
- Counseling Psychology M.A.
- Criminal Justice B.A.
- Criminology B.S., M.S.
- Cultural Studies M.A.
- English B.A.
- General Studies B.G.S
- Geology B.S.
- Hispanic Studies Ph.D.
- History B.A.
- Human Nutrition B.A.
- Mathematics B.A., B.S.
- Music B.M., M.M.
- Music Education M.M.
- Petrophysics M.S.
- Physics B.S.
- Political Science B.A.
- Psychology B.A., M.A., M.S.  
Health Psychology (RELLIS  
Campus Only)  
Human Development & Family  
Studies
- Sociology B.A., M.A., M.S.
- Social Work B.S.W., M.S.W.
- Spanish B.A.
- Statistical Analytics, Computing  
& Modeling M.S.

## College of Business Administration

- Accounting B.B.A.
- Business Administration M.B.A.
- Finance B.B.A.
- General Business Administration  
B.B.A.
- Management B.B.A.
- Marketing B.B.A.
- Taxation M.S.

## College of Education & Human Performance

- Adult Education M.Ed.
- Bilingual Education M.A., M.S.,  
Ed.D.
- Counseling & Guidance M.S.
- Early Childhood M.Ed.
- Education B.S., M.S.
- Educational Administration M.S.
- Educational Leadership Ed.D.
- Instructional Technology M.S.
- Kinesiology B.S., M.S.  
Exercise Science  
Exercise Science: Performance  
Psychology  
Exercise Science: Pre-Physical  
Therapy  
Sport & Leisure Studies  
EC-12 Physical Education  
Sport Business
- Reading Specialization M.S.
- Special Education M.Ed.

## Frank H. Dotterweich

### College of Engineering

- Architectural Engineering B.S.
- Chemical Engineering B.S., M.S.
- Civil Engineering B.S., M.S.
- Computer Engineering B.S.
- Computer Science B.S., M.S.
- Electrical Engineering B.S., M.S.
- Engineering Ph.D.
- Environmental Engineering  
B.S., M.S., Ph.D.
- Industrial Engineering B.S., M.S.
- Industrial Management M.S.
- Industrial Management &  
Applied Engineering Technology  
B.S.
- Mechanical Engineering B.S.,  
M.S.
- Mechatronics Engineering M.S.
- Natural Gas Engineering B.S.,  
M.S.

## Accreditations, Certifications & Approved Programs

Texas A&M University-Kingsville is accredited by the Commission on Colleges of the Southern Association of Colleges and Schools (1866 Southern Lane, Decatur, GA 30033-4097; telephone number 404-679-4501) to award bachelor's, master's, and doctoral degrees. Texas A&M University-Kingsville is committed to providing an educational and work environment that is conducive to the personal and professional development of each individual student and employee. It is our firm commitment to ensure that equal employment opportunity, equal treatment, and equal access to programs and activities will be provided to Texas A&M University-Kingsville's students, employees, prospective employees, and to the public. To achieve this goal, discrimination based on a person's race, color, religion, age, sex, sexual orientation, gender identity, national origin, disability, veteran status, or genetic information is strictly prohibited as defined by federal law and state statute. These protections extend to employment and admissions decisions.